



ESI eSIP Evolution Series and eCloud

ePhone3 v2 and ePhone3 Wall Mount Installation.

This document explains how to install optional metal wall mount bracket and how to convert plastic desktop stand that comes with phone into a wall mount bracket.

Contents

ePhone3 v2	2
<i>Installing optional plastic wall mount bracket</i>	2
<i>Installing optional metal wall mount bracket</i>	5
ePhone3	8
<i>Installing optional metal wall mount bracket</i>	8
<i>Converting plastic desktop stand into wall mount bracket</i>	13
<i>ESI ePhone3 Plastic Wall Mount Template</i>	17

ePhone3 v2

Installing optional plastic wall mount bracket

If mounting phone bracket to a box, simply align and screw the bracket to the mounting holes in the box.

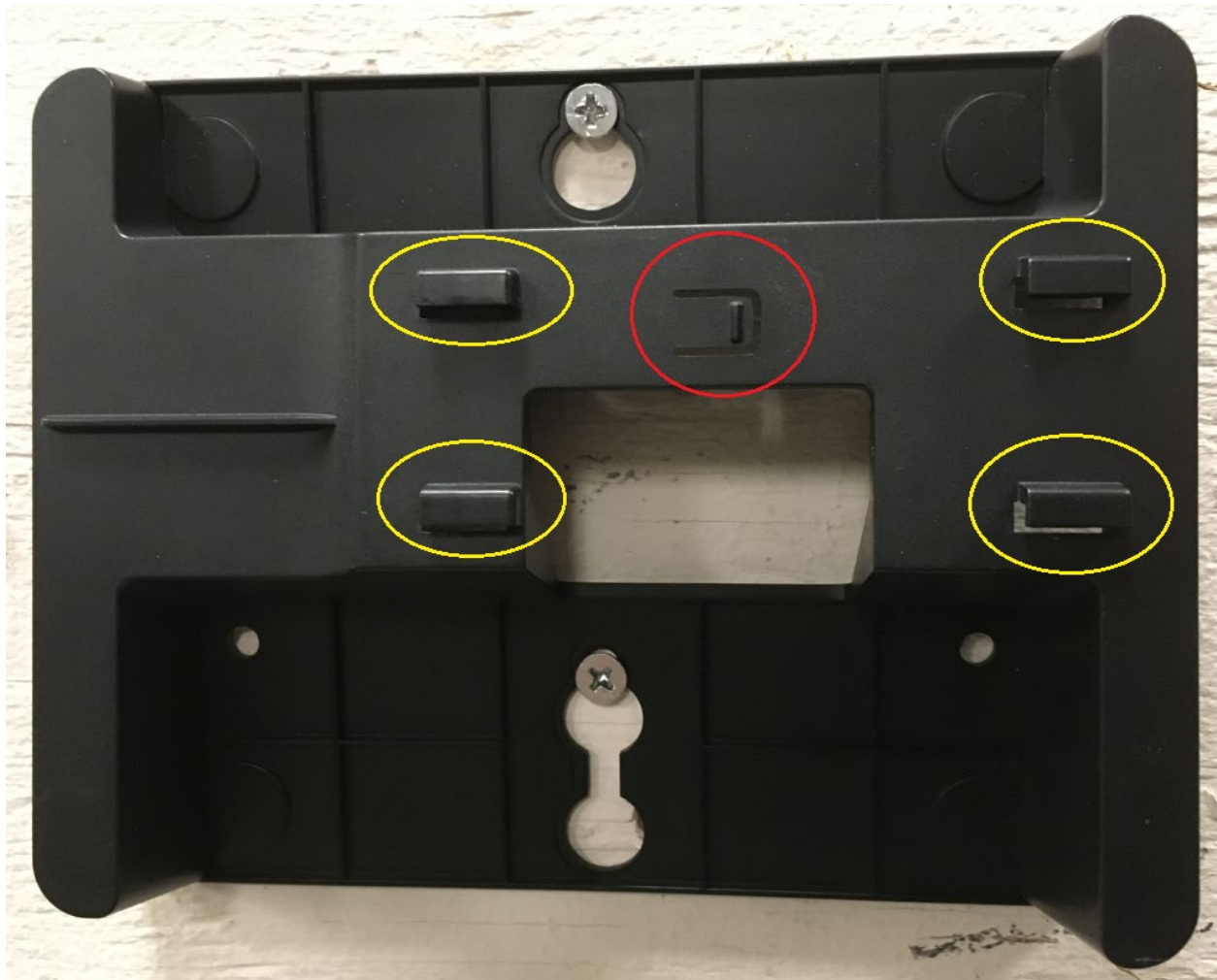
If mounting directly to wall, you will need the following:

1. Drill
2. Screwdriver
3. Supplied screws and wall anchors

Use the bracket to mark locations to drill holes.

Drill holes, install wall anchors and screw bracket to wall.

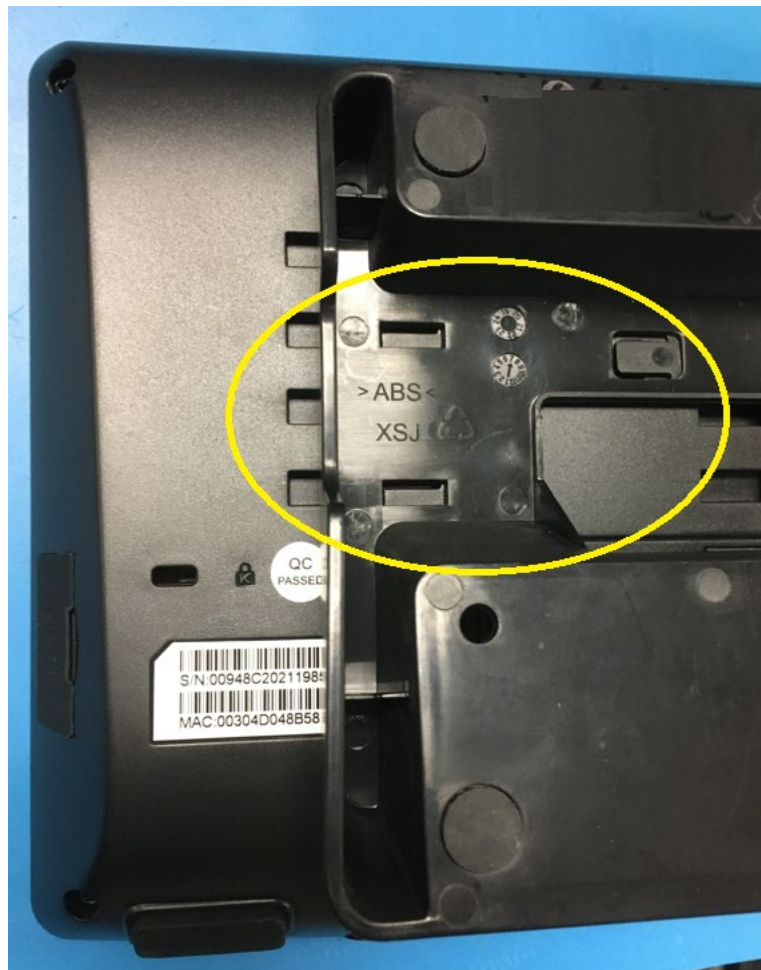
Locate mounting tabs on bracket (circled yellow). Also take note of the locking tab (circled red).



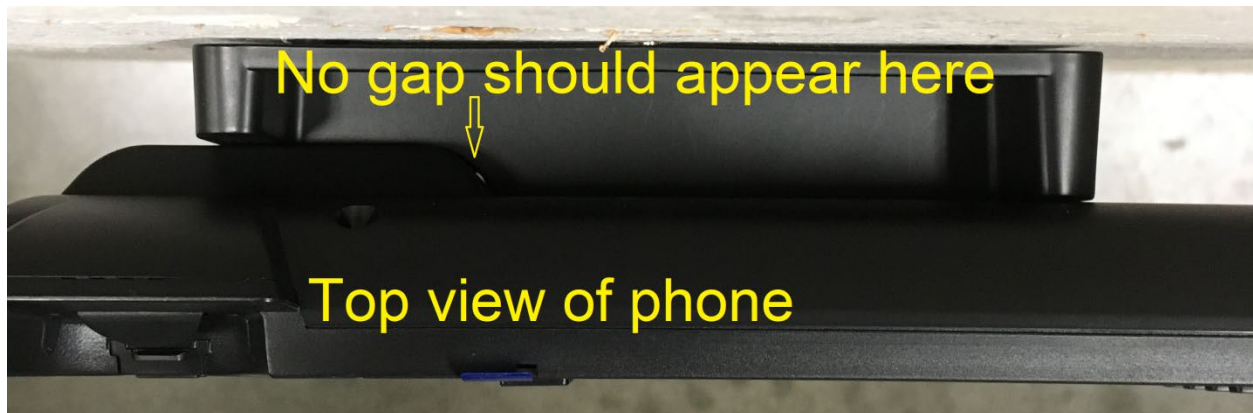
Locate the slots on back of phone (circled yellow). Also take note of the locking indentation (circled red).



Slide phone onto bracket making sure tabs on the bracket engage the slots on the phone, and making sure that the locking tab fully engages the locking indentation, as shown below.



When the phone is fully engaged onto the wallmount, there should not be any gap between the phone and bracket when viewed from above as shown below.



Installing optional metal wall mount bracket

If mounting phone bracket to a box, simply align and screw the bracket to the mounting holes in the box.

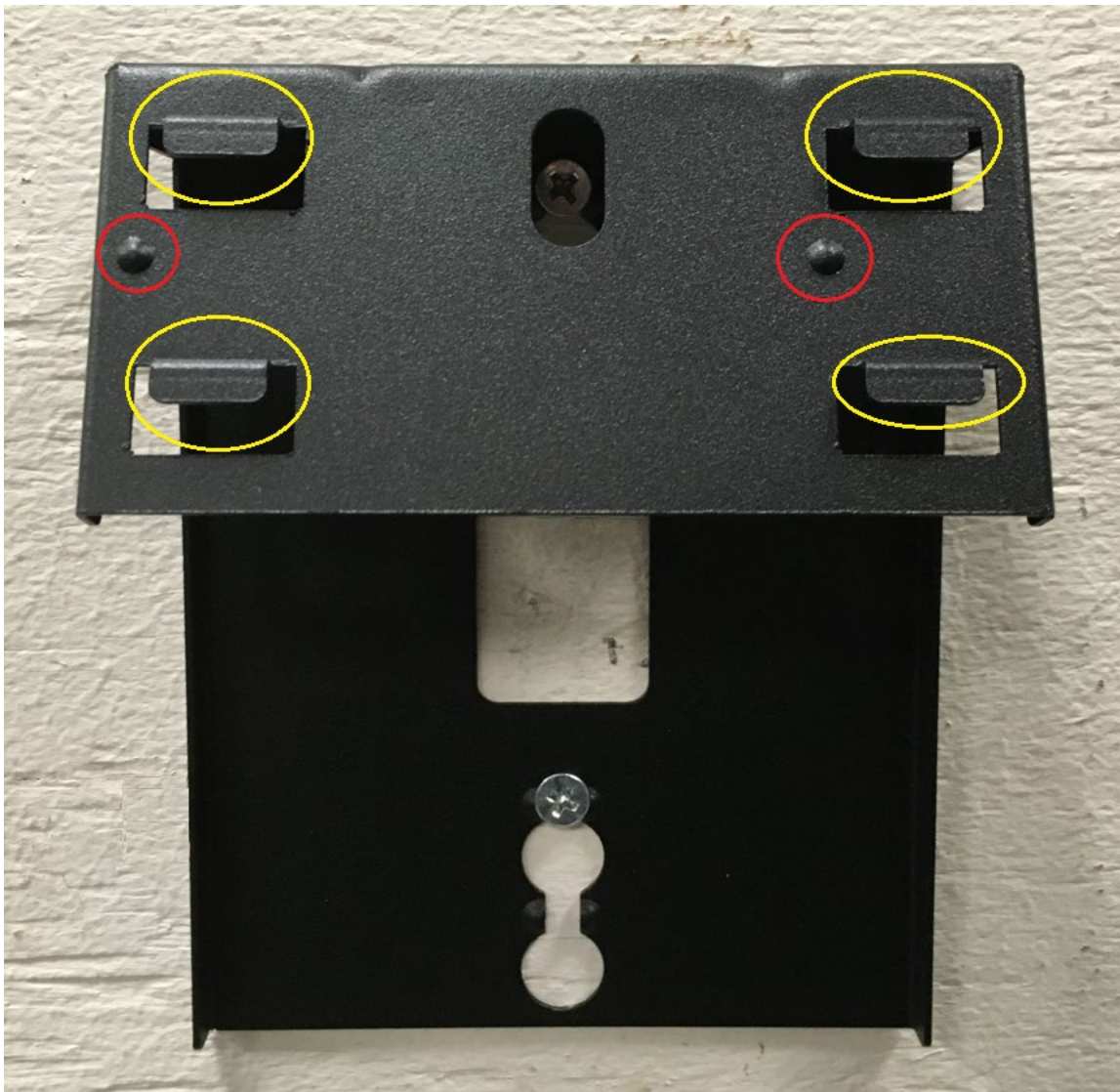
If mounting directly to wall, you will need the following:

4. Drill
5. Screwdriver
6. Two (2) self tapping screws (suggest M3.5x20mm, #6 or similar size)
7. Two (2) wall anchors

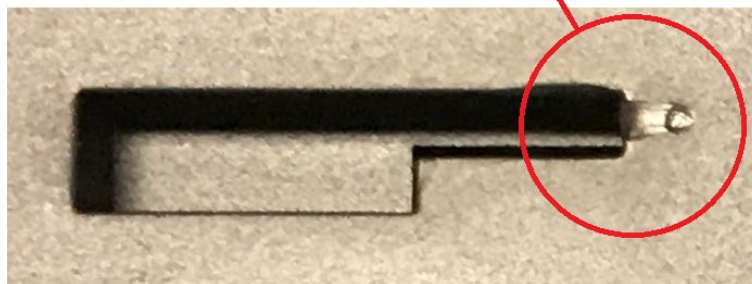
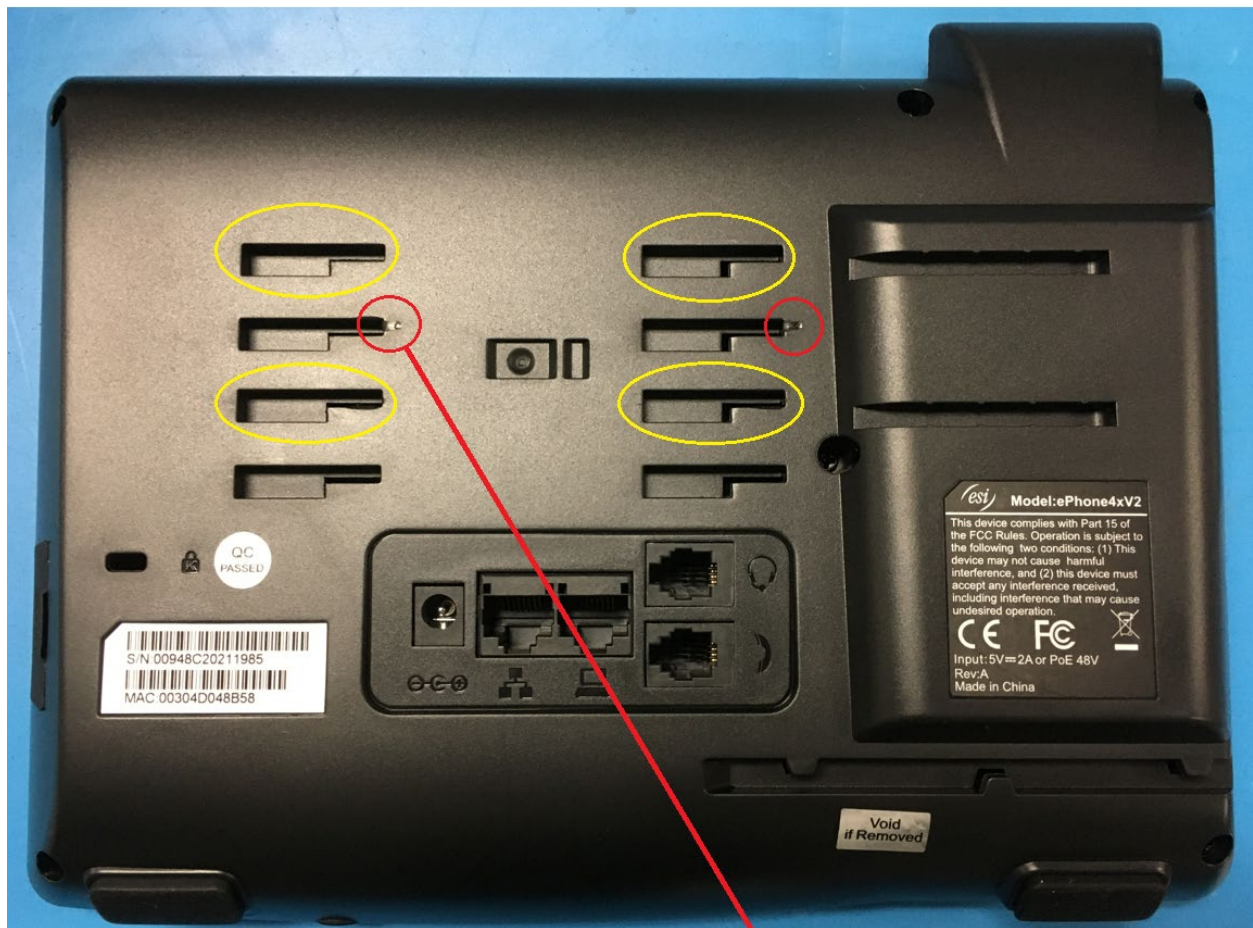
Use the bracket to mark locations to drill holes.

Drill holes, install wall anchors and screw bracket to wall.

Locate mounting tabs on bracket (circled yellow). Also take note of the dimples (circled red).



Locate the slots on back of phone (circled yellow). Also take note of the two indentations in the plastic (circled red), which will become apparent in the next step.



Slide phone onto wall mount bracket making sure tabs on the bracket engage the slots on the phone, and making sure that the dimples engage the plastic. The dimples on the wall mount bracket will engage the phone plastic, which will lock the phone onto the wall mount.



ePhone3

Installing optional metal wall mount bracket

If mounting phone bracket to a box, simply align and screw the bracket to the mounting holes in the box.

If mounting directly to wall, you will need the following:

8. Drill
9. Screwdriver
10. Two (2) self tapping screws (suggest M3.5x20mm, #6 or similar size)
11. Two (2) wall anchors

Use metal bracket to mark locations to drill.



Drill holes, install wall anchors and screw bracket to wall.

Locate mounting tabs on bracket.



Locate slots on back of phone.



Install phone onto bracket. Make sure tabs on the bracket engage the slots on the phone.



Make sure wall mount bracket locking tabs engage the ridge on the back of the phone.

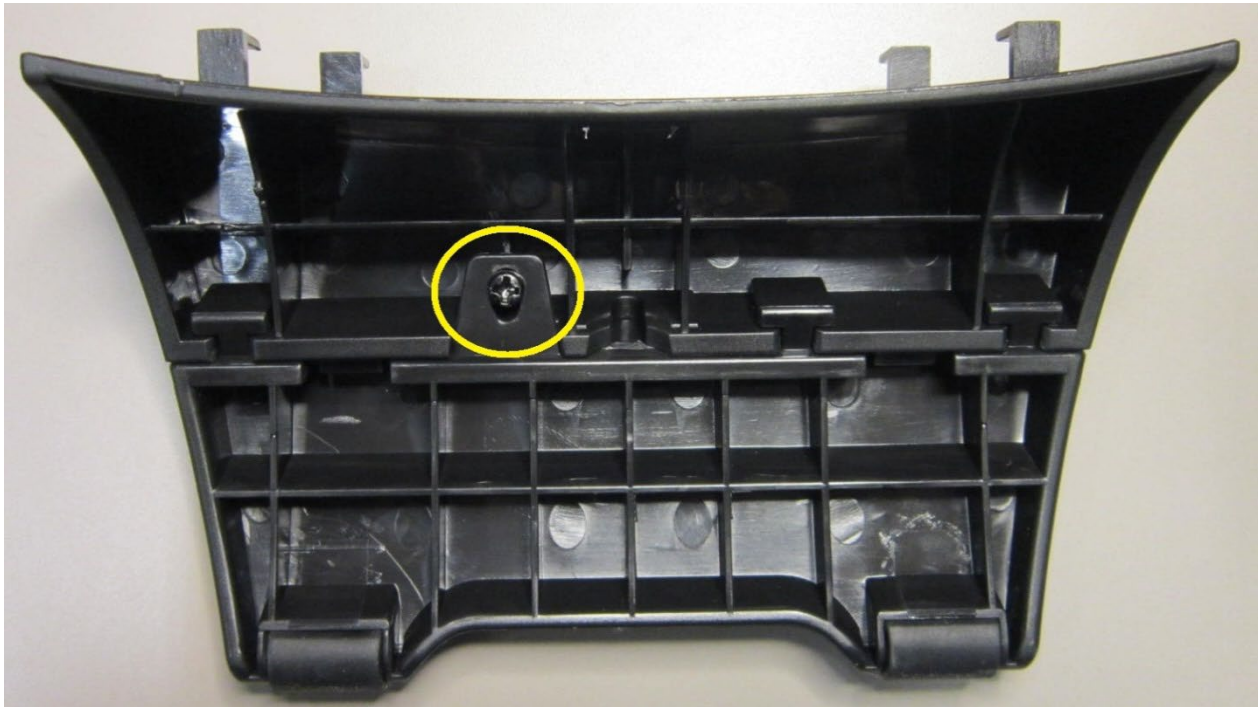


Converting plastic desktop stand into wall mount bracket

You will need the following:

1. Drill
2. Screwdriver
3. Three (3) self tapping screws (suggest M3.5x20mm, #6 or similar size)
4. Three (3) wall anchors

Remove screw from back of stand shown below.



The two halves of the stand will separate and you will use the half shown below.



Locate the slots on the back of the phone onto which the stand will be mounted.

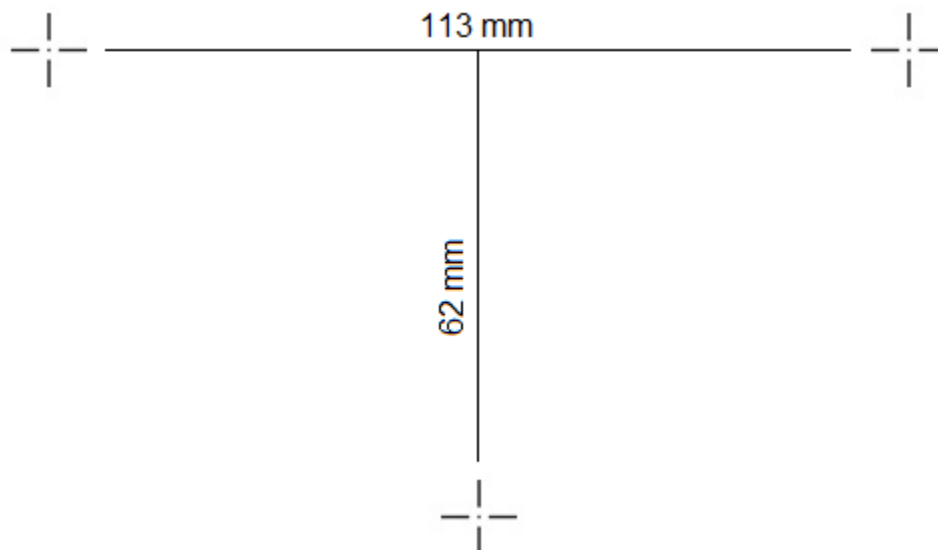


Slide the stand into the slots on the back of the phone as shown below.



Use the template on the last page to mark and drill the mounting location. Use three wall anchors and three self-tapping screws to mount the phone to drywall. Slide the phone onto the wall making sure the three slots shown below engage the screws.





ESI ePhone3 Plastic Wall Mount Template

Use the template to mark and drill the mounting location. Use three wall anchors and three self-tapping screws to mount the phone to drywall.

WARNING: WHEN PRINTING THIS TEMPLATE, BE SURE TO SELECT "ACTUAL SIZE" FROM PRINT OPTIONS OR THE MARKS WILL BE OFF. BE SURE TO CHECK TEMPLATE DIMENSIONS BEFORE PROCEEDING.